

Complete the registration form below and return it to the Egg Harbor Township Police.

Egg Harbor Township Police Department
Bicycle Registration Form

Manufacturer _____ Boys _____ Girls _____
Model _____ Color _____
Wheel Size _____ Serial # _____
Name _____
Address _____
City _____ State _____ Zip _____
Phone # _____ Email _____
Comments _____
Date Registered (office use) _____

Emergency Numbers

To report a police, fire or medical emergency:

CALL 911

Non-emergencies:

Police.....609-927-5200

Community

Policing.....609-926-4040



Bicycle Security Information and Registration



Egg Harbor Township
Police Department
Juvenile & Community Services
3515 Bargaintown Road
Egg Harbor Township, NJ 08234
(609)926-4040

Visit www.EHTPD.Com

Bicycle Theft Prevention

A bicycle represents a substantial investment and is a popular item of theft.

Most bicycle thefts can be prevented by the proper use of a high security lock.

Choosing a lock

U-Shaped bar and shackle locks are the most effective devices for preventing bicycle theft. Its efficient design and solid construction prevents the defeat of this lock by pry bars, hammers, freezing, hacksaws, and bolt cutters. Other devices commonly used such as chains, cables, and padlocks, are ineffective in stopping a thief with proper cutting tools. As an added incentive, many U-shaped lock manufacturers provide a warranty that guarantees the owner against theft up to a specified value.

How to Lock Your Bike

For greater protection, remember that the following steps are as important as the locking device you buy:

If you already have a cable lock, wrap the cable tightly around your

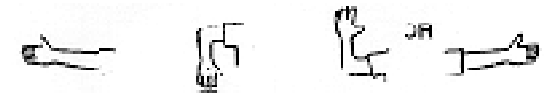
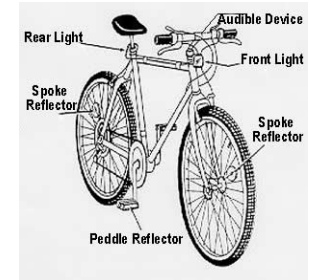


bicycle and a fixed object, keeping the locking device as high above the ground as possible. This will make it difficult to gain leverage by bracing one leg of a bolt cutter against the ground. For bicycles with quick-release front wheels, remove the front wheel and place the bike against a stationary object such as a bike rack. Then, take the front wheel and place it next to the rear wheel. Place the u-bar around the bike rack and the bike seat tube and through the two wheels. Attach the crossbar and lock it. For bicycles with bolt-on front wheels, place the U-bar around the bike rack and down tube, and through the front wheel. Use a cable lock for extra protection. If you do not lock your bike, then do not leave it! Do not leave your bike in an isolated area! Bicycles should be secured in designated bike rack areas or in areas heavily traveled.

Bicycle Registration

Always register your bicycle. Registering your bike helps protect you and serves as a deterrent to would-be bike thieves. It also helps the police in identifying and returning a found or stolen bike to the owner. Registration is encouraged for campus residents. The Egg Harbor Township Police have a bicycle security program that utilizes bicycle registration database. Your information is entered in a database and retained, so that in

the event you were the victim of bicycle theft, and your bicycle were recovered, we would know who to contact. There is no fee for this service.



Bike Hand Signals

As a reminder all bicyclists in the state of New Jersey must follow the motor vehicle laws spelled out in NJSA Title 39. This includes but is not limited to wearing a helmet (under 17 years of age), follow all traffic control devices (lights, stop signs, etc.), an audible device, and the proper use of a headlamp and tail lights.

The Crime Prevention Unit of the Egg Harbor Township Police Department urges you to protect your investment, and learn how you can prevent bicycle theft.

Bicycle registration is as easy as going to WWW.EHTPD.COM and clicking on the link to submit your bicycle registration electronically, or by mailing the form attached in this brochure.